

Desired Future State:

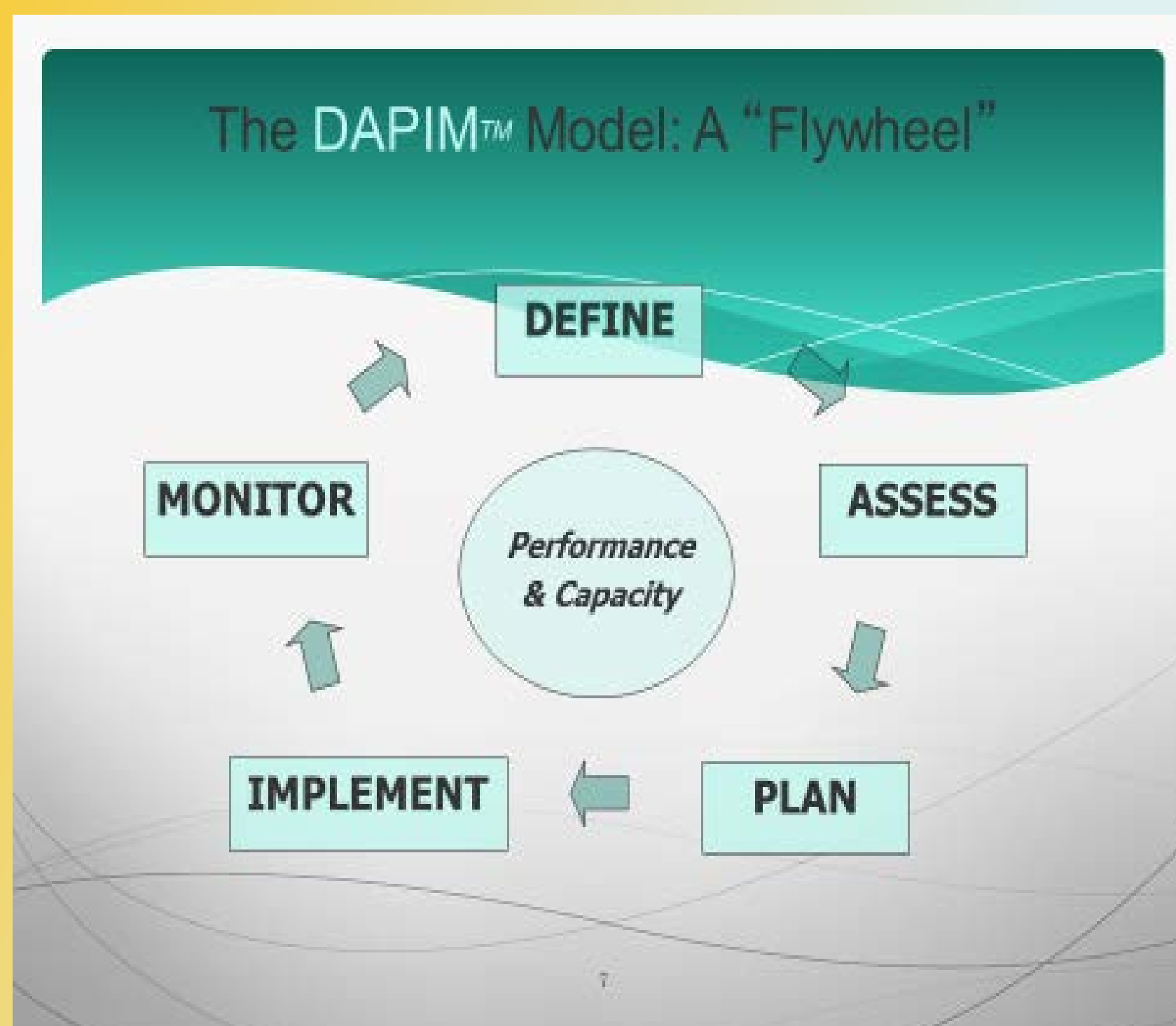
- Refine process with a good product
- All moving in the same direction
- Build on current expertise
- Build on experience
- Create a new beginning for Access
- Individual counties working together as one system

Strengths:

- Dedicated and trained staff
- Directors open to change
- Resource guides exist
- County relationships
- History of collaboration
- DCF is supportive
- Legal structure exists
- Experience with regional approach
- Funding available
- Strong IT component

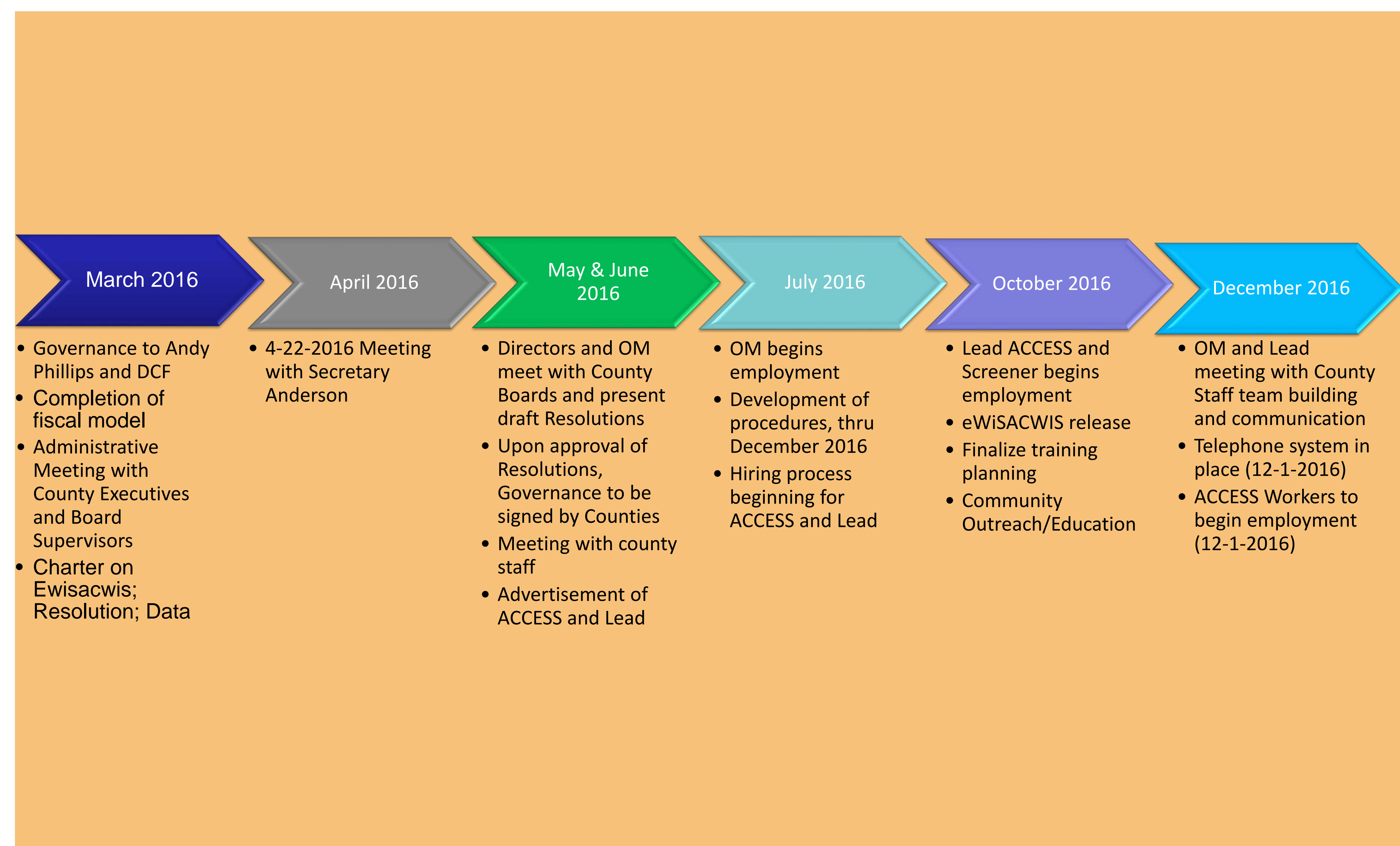
Priority Gaps:

- Staff capacity
- Single point of access
- Governance process & structure
- Marketing
- Development of Regional Access flow
- Stakeholder buy-in



Topic: Regionalized Access

Dates: June 2015-March 2016



Measures of Success

- ❖ Consistent response to screening decisions
- ❖ Screening decisions in-line with State expectations
- ❖ Appropriate back-up for staff/supervisor
- ❖ Feasible funding formula
- ❖ Skilled supervisory oversight
- ❖ Infrastructure that allows for capacity to expand

Root Causes:

- Governance structure issues
- Location and physical structure issues
- Must be fiscally neutral
- DCF process/policy concerns
- Unclear staff roles and model
- High workload
- Technology requirements

Remedies:

- Request DCF modifications to eWISACWIS
- Pursue 66.03 agreement between counties
- Explore DCF process/policy issues necessary to accommodate regional effort
- Identify expenses necessary for concept and secure revenue sources
- Develop staffing process clarifying roles and structure
- Identify potential workload by mining existing data

Recommendations:

- Send Governance Model to Andy Phillips and DCF
- Complete fiscal model
- Meet with County Executives and Board of Supervisors
- Meet with DCF Secretary Anderson
- Meet with County Boards and present draft resolutions
- Meet with county staff
- Develop procedures for operations
- Begin hiring process
- Finalize training plan
- Community outreach and education
- Continue OE efforts ongoing with support from WCWPDS and BRO